



# Diesel/LPG counterbalance trucks

 <p>eco-x</p>	<p>24/7 support</p>
 <p>worldwide network</p>	<p>3 models</p>
<p>DX • DX2 • GX2</p>	





Your truck is important. Its operation is most important of all.

That is why UniCarriers 360° is a complete solution for your business, covering service, fleet information, health & safety, training, tools, equipment and financing.

We know how to optimise your operation.

Using the diesel/LPG-powered UniCarriers counterbalance forklift

# A high-precision workhorse at your service



Powerful, reliable and highly efficient. Add superior ergonomics and low life-cycle costs and you've got an idea of the combustion-engine-powered counterbalance range from UniCarriers. These versatile trucks are designed to ensure maximum productivity during your toughest material handling operations. Available in many configurations and with a wide range of customised options, our counterbalance is the right truck for the job – all the way, every day.



## Trouble-free ownership with OnBoard Service Identification technology

The truck's computer has a built-in troubleshooting system that simplifies service and maximises uptime. It displays alarm codes, error messages and allows various settings. No special tools or computers are needed to fix the truck, shortening repair time.



OnBoard Service Identification

## Advanced ergonomics for improved performance

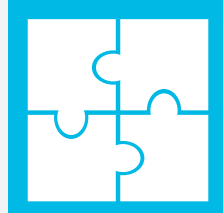
The spacious cabin, adjustable seat, memory lock-equipped steering wheel and armrest with electro-hydraulic fingertip controls allow the driver to easily control the truck in an ergonomic way. Combined with its car-like driving characteristics, this makes our counterbalance truck a pleasure to drive.



Ergonomic design

## Shared components for maximum uptime

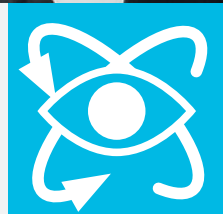
Our counterbalance trucks are built with the UniCarriers Modular Design Concept – meaning they only need to carry a limited number of components.



Modular Design Concept

## Cabin comfort in all conditions

The optional well-insulated cabin adds to both comfort and safety. Wide glass doors and a panoramic front windscreen provide superior all-round visibility.



All-round visibility

ProVision mast design for excellent forward visibility (DX).

Sensitive fingertip controls conveniently positioned in the armrest.

Adjustable steering wheel with memory lock makes it easy to find the perfect driving position.

UniCarriers truck computer with PIN-code access enables time-saving OnBoard Service Diagnostics and helps prevent unauthorised use.

Two seating options offer different levels of multi-adjustable suspension. Complete with seatbelt.



# Bespoke solutions

High levels of customisation create the right solution for every application.



Front mud guards



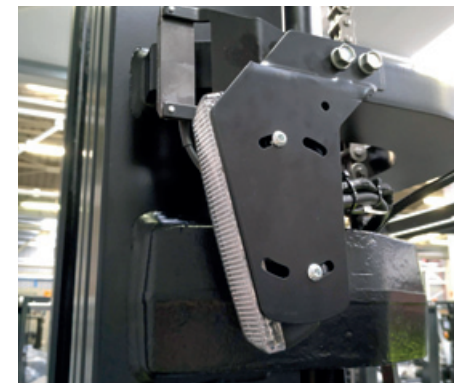
LPG reservoir tank



Blue lamp



USB charger



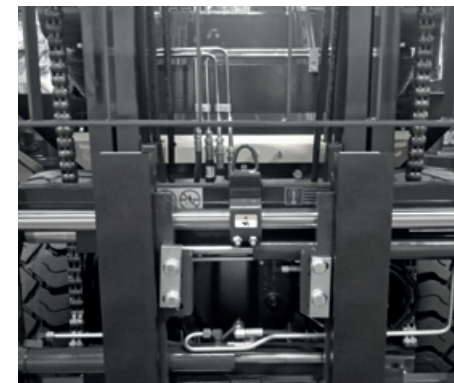
Lights on mast



Cabin options



Rear assist grip



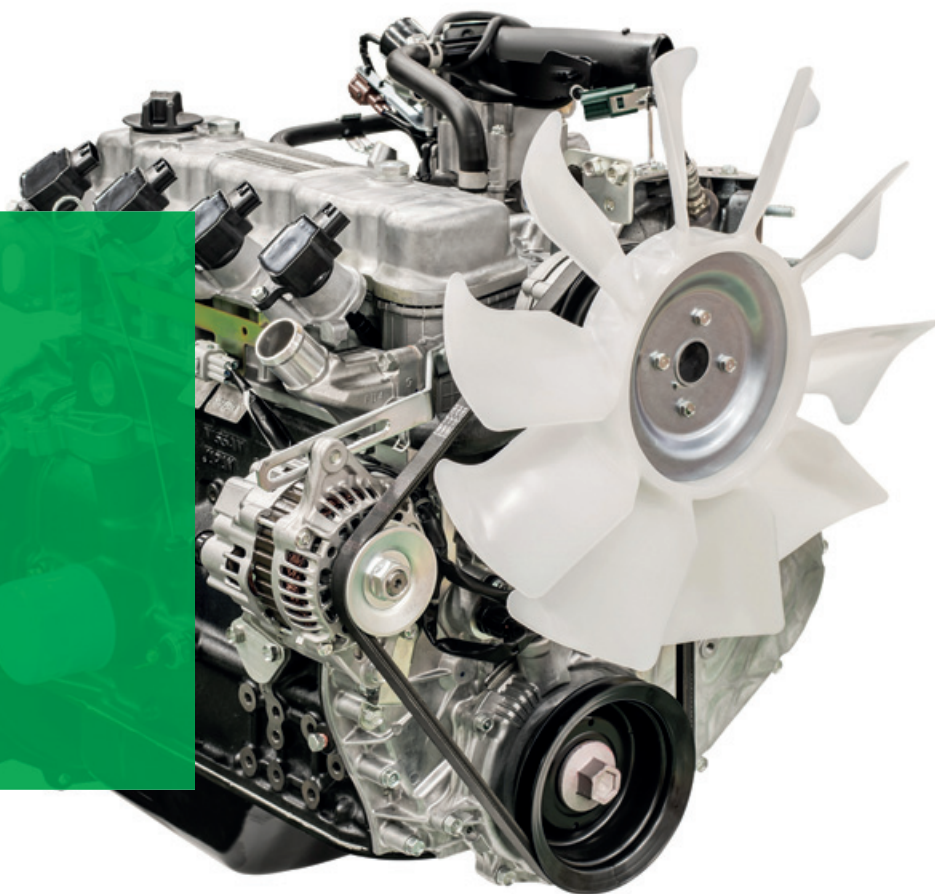
Integral fork positioner



Road license kit



The power of  
**trust**



# DX

Your versatile workmate

Model (LPG)	DX-15	DX-18	DX-20	DX-25	DX-30	DX-32
Lift capacity, kg	1500	1750	2000	2500	3000	3200
Load centre, mm	500	500	500	500	500	500
Truck width, mm	1080	1080	1155	1155	1230	1230
Turning radius, mm	1970	2000	2190	2250	2390	2390
Overhead guard height, mm	2115	2115	2130	2130	2155	2155
Length to forkface, mm	2260	2300	2530	2605	2770	2770

Utilising our own advanced engine technology, the industrial combustion engines available for our counterbalance trucks – diesel or LPG – meet the Euro Stage V environmental standards. Excellent performance, impressive fuel efficiency and a service-friendly design further boost productivity and provide low life-cycle costs.

Loading, unloading, transporting and stacking: the tough yet comfortable DX has got what it takes to tackle the job and can handle loads of 1.5 – 3.2 tonnes. Available with a state-of-the-art LPG engine, the DX will provide top efficiency with low fuel consumption and great environmental benefits. A range of six models with different configurations and options makes the DX the right truck for the job as part of any operation.

### Have it your way

Innovative features like fingertip controls, a multifunctional LCD display and PIN-code access come as standard – to mention only a few examples of extraordinary standard equipment. To further customise your truck, you can add unique options such as a well-insulated cabin, a ProVision triplex mast, a shock absorber system for fragile goods handling and joystick controls for lift and tilt functions, as well as a wide range of various forks and attachments.

### World-leading LPG engine technology

The ultra-clean LPG engine features an advanced engine control system with three-way catalyst and closed-loop system, ensuring low fuel consumption and extremely low emission levels without compromising on performance. For easy LPG handling during replacement of LPG tanks, the holding bracket swings down, thereby reducing the risk of back strain.

### Speed control button

Performance linked to speed regulations or operator skills can be optimised using the speed control settings.

### Robust diesel engine

The four-cylinder diesel engines with proven high levels of reliability are extremely fuel efficient and low-emission. Robust technology ensures low maintenance costs. Rapid preheating makes the engine very easy to start. A Diesel Particle Filter (DPF) is standard on all diesel models.

### ECO-driving button

Just a simple press of the ECO-driving button will reduce fuel consumption by up to 18%, effectively reducing noise levels while improving operator comfort.

### A pleasure to drive, a treat to handle

The driving characteristics of the DX are engineered to be composed, tight and direct – the driver always has a sense of control and comfort. The Cushion Stability Control (CSC) system improves lateral stability while cornering.

### Floating driver platform for comfort

The driver platform is attached to the chassis via a patented four-point shock absorber system, further boosting productivity. This enhances driving comfort by effectively reducing shocks, vibration and noise.

### Innovative ProVision triplex mast design

Smart technology uses two full free-lift cylinders positioned at the side of the mast instead of one, meaning improved load control, better forward visibility and facilitated aided handling in confined spaces.



# DX2

**Tireless workhorse**

Model (Diesel)	DX2-20	DX2-25	DX2-30	DX2-35
Lift capacity, kg	2000	2500	3000	3500
Load centre, mm	500	500	500	500
Truck width, mm	1150	1150	1275	1290
Turning radius, mm	2200	2230	2380	2440
Overhead guard height, mm	2145	2145	2165	2175
Length to forkface, mm	2485	2560	2735	2795



# GX2

**When the going gets tough**

Model (LPG/Diesel)	GX2-40	GX2-45	GX2-50	GX2-50H	GX2-55
Lift capacity, kg	4000	4500	5000	5000	5500
Load centre, mm	500	500	500	600	600
Truck width, mm	1415	1460	1460	1460	1460
Turning radius, mm	2580	2730	2760	2890	2940
Overhead guard height, mm	2296	2296	2296	2296	2296
Length to forkface, mm	3000	3130	3170	3310	3360

Thanks to its simplicity of handling and its great adaptability to the environment, the DX2, with capacities from 2 – 3.5 tonnes, is the perfect choice for heavier applications or hard work outdoors for longer periods of time. The truck is also equipped with a robust and powerful diesel engine that meets the most stringent Euro stage V emission regulations.

### Have it your way

Innovative features like fingertip controls, a multifunctional LCD display, PIN-code access and load weight indicator come as standard – to mention but a few examples of standard equipment above the ordinary. And to further customise your truck, you can add a large range of options to create a truly bespoke machine.



### Robust and easy to service

The robust and powerful design ensures a trouble-free working life and low maintenance costs. When needed, the truck is easy to service using the integrated diagnostics system for rapid troubleshooting and also has a service-friendly construction with a top panel that opens a full 90 degrees. Levels of uptime are greatly enhanced by reducing the frequency at which components and fluids need to be replaced, further lowering life-cycle costs.

### Reliable and efficient

Rugged and solid, our GX2 counterbalance is designed for hard work in the harshest of conditions. The GX2 is a comfortable heavy-duty truck for loads up to 4.0 – 5.5 tonnes, with 2-speed automatic transmission as standard and a world-class diesel or LPG combustion engine. An electronically controlled parking break allows safe, effective immobilization of the truck with a minimum of effort and without restricting knee and leg movement.



### Space for productivity

The GX will serve you silently and almost vibration-free. The driver can enjoy an easy-to-enter and ergonomically-designed workplace with excellent all-round visibility. The spacious cabin provides ample room for the operator's legs, arms and head even when wearing a safety helmet. Adjustable seating and steering wheel make it easy to find the perfect driving position for relaxed, efficient work throughout the shift.



### A pleasure to drive, a treat to handle

The driving characteristics of the DX2 are engineered to be composed, tight and direct – the driver always has a sense of control and comfort. The low center of gravity provides excellent lateral stability.

### Floating power train for comfort

Further contributing to productivity, the floating power train is attached to the chassis via a four-point shock absorber system. This enhances driving comfort by effectively reducing shocks, vibration and noise.

It's all about  
the price.  
**But what  
price?**

## Reduce your Total Cost of Operation with UniCarriers

We agree. Price is everything. Or to be more specific: your Total Cost of Operation (TCO). That's why we're so focused on cutting costs and improving your material handling. The truck and its performance play an important role in this regard, but our main goal is to support you in optimising your warehouse operations to give you the best value for your money. Which – in the long run – is what creates a winner.

**mitsubishi logisnext europe**

Mitsubishi Logisnext Europe reserves the right to make any changes without notice concerning colours, equipment or specifications detailed in this brochure, or to discontinue individual models. The colours of vehicles delivered may differ slightly from those in this brochure. The specifications vary for different countries depending on local market conditions. Please consult your local dealer to ensure that the vehicle delivered conforms with your expectations. All values are determined based on the standard condition and may vary due to motor and system tolerances, the condition of the truck and operational conditions. Some equipment shown on photos is optional.

[unicarrierseurope.com](http://unicarrierseurope.com)